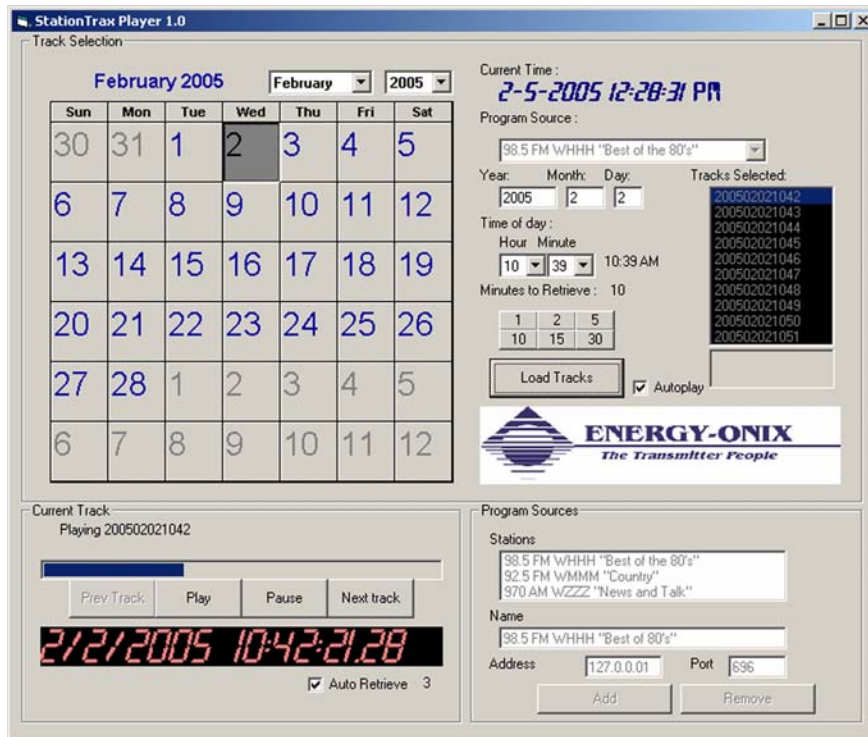


THE DOCUMENTOR - 2

2 Channel, 365 Day Station Logger



Player Selector Screen

- **Two Independent Channels – ideal for AM/FM Combo or one stereo**
- **Basic Module for building block of Multiple audio logger.**
- **365 Day Storage Time – Exceeds FCC 60 day requirement**
- **Automatically Deletes Recording After 365 Days**
- **Recordings Can Be Selected For Playback by Month, Date, Hour and Minutes**
- **Can Be Connected to a LAN Which May Have As Many as 10 Computers, each of which Simultaneously Can Select and Playback Any Specific Pre-Recorded Program at the Time Slot Selected.**
- **Expandable with Option for Additional Audio Channels.**
- **Can be used with the Internet to provide communication between remote recorders and players.**

“The Transmitter People”



ENERGY-ONIX

BROADCAST EQUIPMENT CO., INC.

P.O. Box 801, 1306 River Street, Valatie, New York 12184
518-758-1690 FAX 518-758-1476 Toll free 888-324-6649
E-Mail: energy-onix@energy-onix.com
WEB PAGE: www.energy-onix.com

Description

The **Documentor - 2** is the basic hardware in the **Documentor** series. It contains a recorder and player. The recorder accepts (2) mono or (1) stereo input and can store these programs for 365 days.

The Player can be used to select any specific portion of this recorded program that is stored on the recorder. The player can be installed in terminals of a LAN system that would permit selection of the desired program by month, day, hour and minute. As many as 10 players can simultaneously select and monitor independently, any portion of the 365 days of programming stored on the recorder.

There is no limitation to the number of audio channels that can be recorded. In order to provide two mono or one stereo channel, only one **Documentor - 2** is required. For 4 mono channels, a second **Documentor - 2** would be used. Each **Documentor - 2** occupies 3-1/2" of 19" rack space. The output of each **Documentor** is connected to a hub which is then used to drive the existing Ethernet connection.

A conventional keyboard and "mouse" is used to select the program source as well as the specific time of interest.

A popular size that can monitor 6 mono or 3 stereo channels consists of (3) **Documentor-2** and occupies only 10-1/2" of 19" rack space.

Technical Specifications of Documentor-2

Audio Input to Recorder

Level - +10 dbm
Impedance - 600 ohms unbalanced
Connector - RCA
Capacity - (2) Mono or (1) Stereo

Audio Output from Player

+10 dbm
Impedance 600 ohm unbalanced
Connector - RCA
Capacity - (2) mono or (1) Stereo

Frequency Response \pm 0.5 db 30 to 11,000 Hz
(\pm 0.5 db 30 to 22,000Hz) for 180 day storage)

Ethernet Connection 10/100 Mb

Power Input

Line Voltage 115/230 auto switching

Mechanical

Size
Weight
Storage Time
Power Consumption 250W

19"W x 3-1/2" H x 20"D
20 pounds
365 days



Multi-Channel Logger
Pictured are two multi-channel applications of the Documentor -2. In the left-hand picture, (6) Documentors, together with (12) mono receivers are used to monitor and record (12) off-air programs. The right-hand picture describes (2) "Documentors" arranged to monitor and record (4) off-air programs.



Basic Documentor-2



ENERGY-ONIX

BROADCAST EQUIPMENT CO., INC.

P.O. Box 801, 1306 River Street, Valatie, New York 12184
518-758-1690 FAX 518-758-1476 Toll free 888-324-6649
E-Mail: energy-onix@energy-onix.com
WEB PAGE: www.energy-onix.com
