

V33075AM-CL2 QUICK REFERENCE DATA

ELECTRICAL CHARACTERISTICS

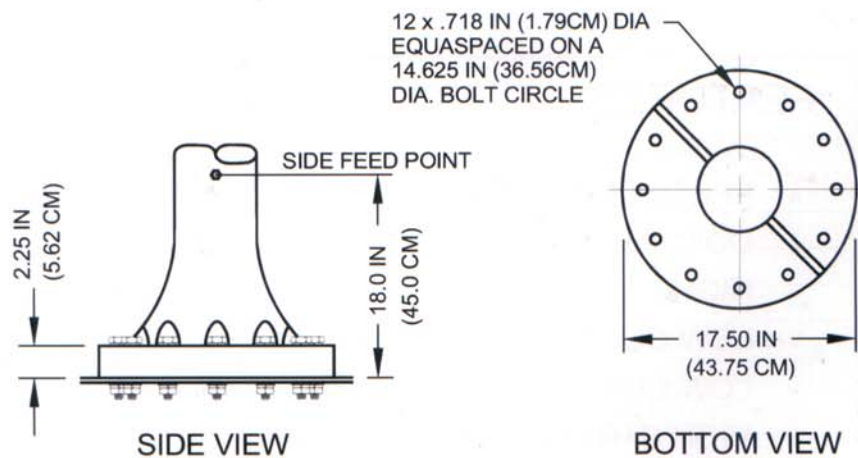
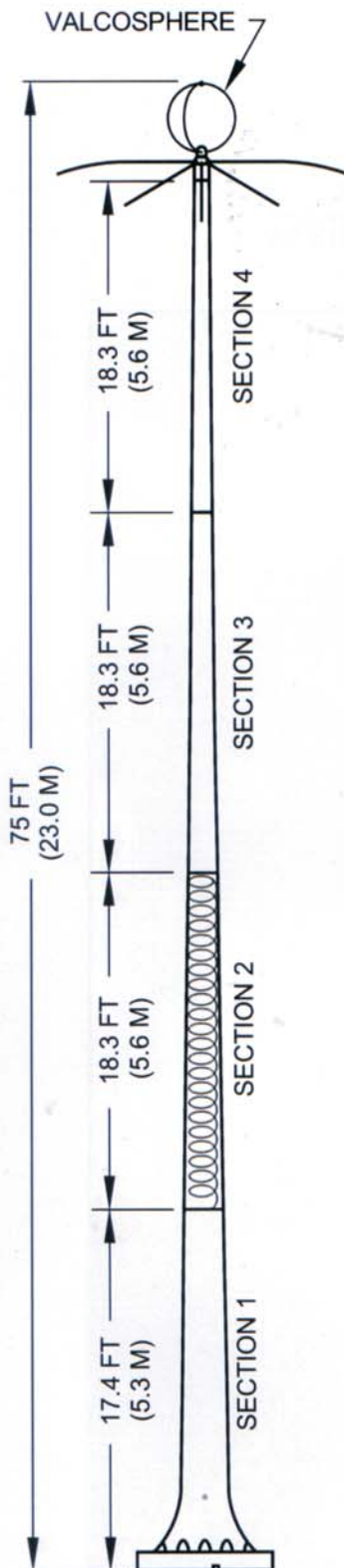
RESONANT FREQUENCY (f_0)	540 - 1700 KHZ (SPECIFIED BY CUST)
POWER RATING	2 KW FOR FREQ OF 540 - 1000 KHZ
	5 KW FOR FREQ OF 1000 - 1700 KHZ
DRY WITHSTANDING VOLTAGE	30 KV
ELECTRICAL LENGTH	DEPENDANT ON f_0
POSITION OF LOADING COIL	2ND SECTION
INPUT IMEDANCE AT f_0	DEPENDANT ON f_0
Q AT SELF-RESONANCE	DEPENDANT ON f_0

MECHANICAL CHARACTERISTICS

MECHANICAL LENGTH	75 FT (23 M)
TOP TERMINATION	VALCOSPHERE
VALCOSPHERE	32 IN (81 CM) DIA
ANTENNA MATERIAL	FILAMENT WOUND EPOXY/FIBREGLASS
JOINTS	BRONZE FERRULE C/W LOCKING PIN AND BANANA PLUG
FINISH	EPOXY POLYAMIDE PAINT
WIND LOADING TEST	150 MPH (241 KPH)
TEMPERATURE	-60°F TO 150°F (-50°C TO 65°C)
WEIGHT	800 LBS (362 KG) MAX

NOTES:

1. THE ADVANTAGE OF THE CENTRE LOADING COIL IN SECTION TWO IS TO PROVIDE REDUCED RESONANCE OVER A STRAIGHT VERTICAL WHIP, THEREFORE REDUCING BASE FEED VOLTAGE AND PROVIDING A GREATER POWER HANDLING CAPABILITY.
2. DO NOT USE LEAD BASE PAINT TO TOUCH UP OR REPAINT ANTENNA.



P.O. BOX 603 GUELPH, ONTARIO, CANADA, N1H 6L3
 TEL 519-824-3220 FAX 519-824-3411
 INTERNET: www.valcom-guelph.com EMAIL: enquiries@valcom-guelph.com