

V33094AM-CL2

QUICK REFERENCE DATA

ELECTRICAL CHARACTERISTICS

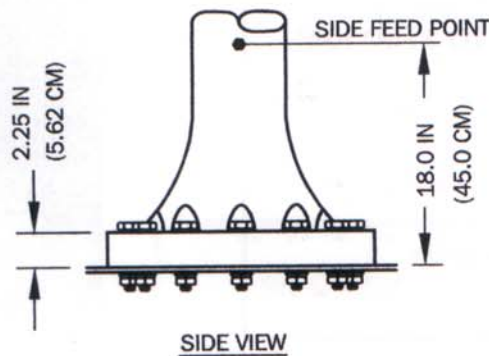
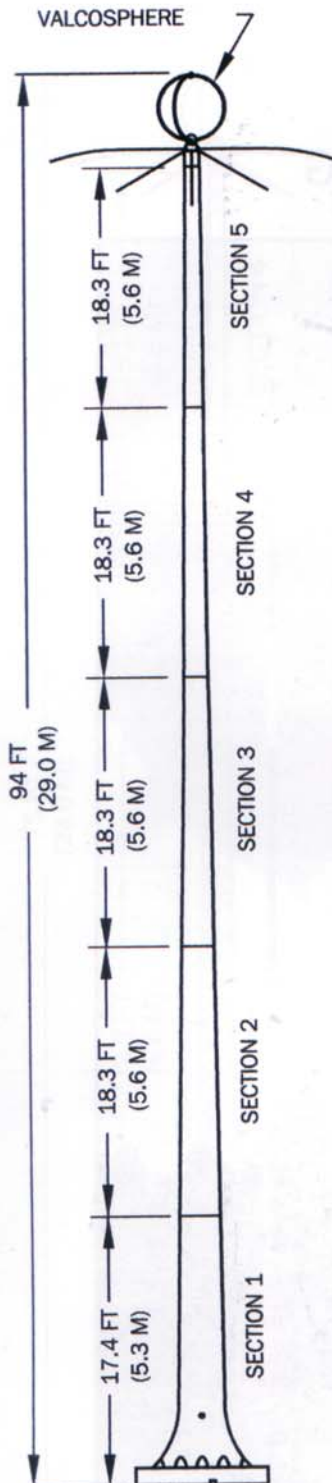
RESONANT FREQUENCY (f_o)	540 - 1700 KHZ (SPECIFIED BY CUST)
POWER RATING (*WITH TOP RADIALS)	3 KW FOR FREQ OF 540 - 600 KHZ
	5 KW FOR FREQ OF 600 - 1000 KHZ
	10 KW FOR FREQ OF 1000 - 1700 KHZ
DRY WITHSTANDING VOLTAGE	30 KV
ELECTRICAL LENGTH	DEPENDANT ON f_o
POSITION OF LOADING COIL	2ND SECTION
OPERATING FREQUENCY	SPECIFIED BY CUSTOMER
INPUT IMPEDANCE AT f_o	DEPENDANT ON f_o
Q AT OPERATING FREQUENCY	DEPENDANT ON f_o

MECHANICAL CHARACTERISTICS

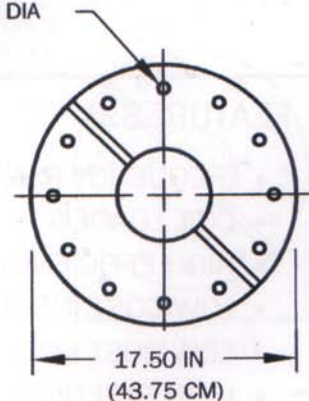
MECHANICAL LENGTH	94 FT (28.7 M)
VALCOSPHERE	32 IN (81.3 CM) DIA
ANTENNA MATERIAL	FILAMENT WOUND EPOXY/FIBREGLASS
TOP TERMINATION	VALCOSPHERE
JOINTS	BRONZE FERRULE C/W LOCKING PIN
WIND LOADING TEST	150 MPH (241 KPH)
TEMPERATURE	-60°F TO 150°F (-50°C TO 65°C)
FINISH	EPOXY POLYAMIDE PAINT
WEIGHT	950 LBS (432 KG) MAX

NOTES:

- ADVANTAGE OF CENTRE LOADING COIL IS REDUCED RESONANCE OVER A STRAIGHT WHIP AND THEREFORE REDUCED BASE FEED VOLTAGE AND GREATER POWER HANDLING CAPABILITY.
- DO NOT USE LEAD BASE PAINT TO TOUCH-UP OR REPAINT ANTENNA.



12 x .718 IN (1.79CM) DIA
EQUASPACED ON A
14.625 IN (36.56CM)
DIA. BOLT CIRCLE



BOTTOM VIEW



P.O. BOX 603 GUELPH, ONTARIO, CANADA, N1H 6L3
TEL 519-824-3220 FAX 519-824-3411
INTERNET: www.valcom-guelph.com EMAIL: enquiries@valcom-guelph.com